



MONTHLY SUMMARY OF STATISTICS

WESTERN
AUSTRALIA

EMBARGO: 11:30AM (CANBERRA TIME) THU 30 SEPTEMBER 1999

C O N T E N T S

	<i>page</i>
Notes	2
 TABLES	
1 Population	4
2 Tourism	8
3 Employment	14
4 Retail	19
5 Construction	20
6 Production	23
7 Overseas Trade	27
8 Transport	29
9 Finance	30
10 Statistical Summary	31

- For more information about these and related statistics, contact Information Services on (08) 9360 5140 or refer to the back cover of this publication.

NOTES

FORTHCOMING ISSUES

<i>ISSUE</i>	<i>RELEASE DATE</i>
October 1999	29 October 1999
November 1999	30 November 1999
December 1999	23 December 1999



SYMBOLS AND OTHER USAGES

n.a.	not available
n.e.i.	not elsewhere included
n.p.	not available for publication but included in totals where applicable
n.y.a.	not yet available
—	nil or rounded to zero
..	not applicable
*	subject to sampling variability too high for most practical purposes
p	preliminary - figure or series subject to revision
r	figure or series revised since previous issue
—	break in continuity of series (where drawn between two consecutive figures or columns)



REVISIONS THIS MONTH

Retail Trade Turnover Data

The data contained in this publication has been adjusted following an improvement to the coverage of the Retail Suvey population frame. This improvement has reduced the level of Retail turnover estimates in most industries but there has been little change in month to month movements. For more information please refer to paragraphs 16-21 of the Explanatory notes in Catalogue 8501.0 Retail Trade July 1999 edition or contact Information Services on (08) 9360 5140.

COLIN NAGLE
REGIONAL DIRECTOR, WESTERN AUSTRALIA

CONTENTS

Page

TABLES

Population

1.1	Estimated Resident Population	4
1.2	Components of Population Change	5
1.3	Registration of Births, Deaths, Marriages and Divorces	6
1.4	Rates of Births, Deaths, Marriages and Divorces	7

Tourism

2.1	Overseas Arrivals and Departures	8
2.2	Short-term Overseas Visitor Arrivals from Selected Countries	9
2.3	Short-term Overseas Visitor Arrivals by Air for Holiday	10
2.4	Short-term Departures of Residents to Selected Destinations	11
2.5	Short-term Departures of Residents by Air to Selected Destinations: Holiday	12
2.6	Tourist Accommodation	13

Employment

3.1	Labour Force Status: Seasonally Adjusted	14
3.2	Labour Force Status: Trend	15
3.3	Average Weekly Earnings of Employees: Trend	16
3.4	Industrial Disputes Causing Stoppage of Work	17
3.5	Wage and Salary Earners: Industry-Sector	18

Retail

4.1	Monthly Retail Turnover	19
-----	-------------------------	----

Construction

5.1	Dwelling Units Approved	20
5.2	Non-Residential Building Approved	21
5.3	Selected Housing Price Indexes: Perth	21
5.4	Price Index of Materials Used in Building Other Than House Building:Perth	22

Production

6.1	Livestock Slaughtered	23
6.2	Meat Produced	23
6.3	Wool Receivals and Live Sheep Exports	24
6.4	Energy Production	25
6.5	Mineral Exploration: Expenditure by Type of Mineral Sought	26
6.6	Mineral Production	26

Overseas Trade

7.1	Imports by Selected Divisions	27
7.2	Exports by Selected Divisions	28

Transport

8.1	New Motor Vehicle Registrations	29
8.2	Vehicle Registration Statistics	29

Finance

9.1	Private New Capital Expenditure by Selected Industry Groups	30
-----	---	----

Statistical Summary

10.1	Statistical Summary	31
------	---------------------	----

1.1

ESTIMATED RESIDENT POPULATION

	<i>Males</i>	<i>Females</i>	<i>Persons</i>
	no.	no.	no.
Financial Years			
1995-96	887 577	877 679	1 765 256
1996-97	904 382	893 488	1 797 870
1997-98 p	921 613	909 786	1 831 399
Calendar Years			
1996	896 075	885 793	1 781 868
1997 p	911 537	900 552	1 812 089
1998 p	930 025	917 778	1 847 803
Quarters			
Sep 97 p	908 282	897 414	1 805 696
Dec 97 p	911 537	900 552	1 812 089
Mar 98 p	917 629	906 190	1 823 819
Jun 98 p	921 613	909 786	1 831 399
Sep 98 p	926 331	914 112	1 840 443
Dec 98 p	930 025	917 778	1 847 803

Source: ABS Catalogue No. 3101.0 (Table 4).

ANALYSIS OF TABLE 1.1

The estimated resident population of Western Australia at 31 December 1998 was 1,847,803, an increase of 7,360 in the December quarter and 35,714 since 31 December 1997. The annual growth rate during the calendar year 1998 was 2.0% compared with a rate of 1.7% for the previous twelve months.

1.2 COMPONENTS OF POPULATION CHANGE

	Natural increase	Net estimated overseas migration(a)	Net estimated interstate migration	Total increase
	no.	no.	no.	no.
Financial Years				
1995-96	13 953	12 339	4 066	31 469
1996-97	14 158	12 267	6 189	32 614
1997-98 p	13 556	15 247	4 726	33 529
Calendar Years				
1996	13 980	12 334	5 683	31 997
1997 p	13 690	11 239	5 292	30 221
1998 p	14 041	17 799	3 874	35 714
Quarters				
Sep 97 p	2 935	3 884	1 007	7 826
Dec 97 p	3 303	1 937	1 153	6 393
Mar 98 p	3 315	6 729	1 686	11 730
Jun 98 p	4 003	2 697	880	7 580
Sep 98 p	3 348	4 520	1 176	9 044
Dec 98 p	3 375	3 853	132	7 360

(a) Includes an adjustment for 'category jumping'.

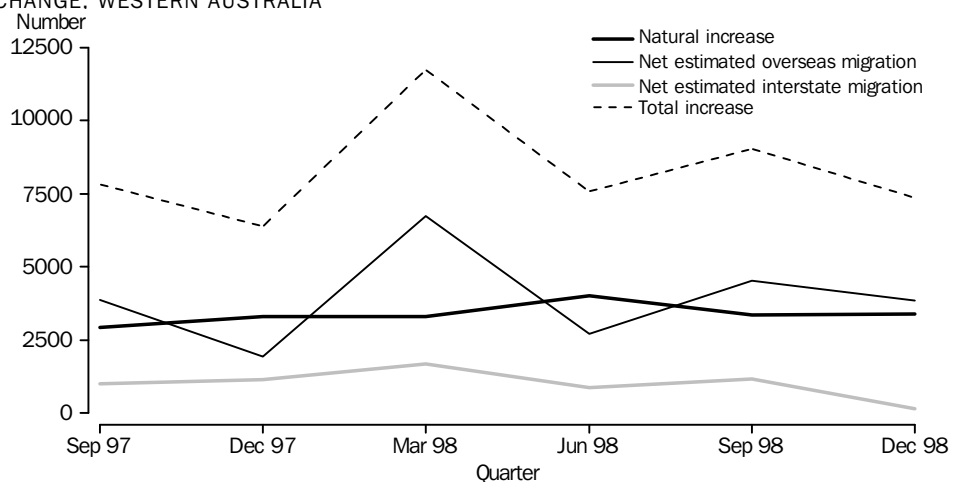
Source: ABS Catalogue No. 3101.0 (Table 2).

ANALYSIS OF TABLE 1.2

In the December quarter 1998, the population increased by 7,360 compared with an increase of 9,044 in the previous quarter. Natural increase was up less than 1% on the September quarter 1998. However, this was more than offset by falls of 89% and 15% in net estimated interstate and overseas migration, respectively.

For the year ended 31 December 1998, the increase of 35,714 was 18% higher than the increase in the previous 12 months.

COMPONENTS OF POPULATION CHANGE, WESTERN AUSTRALIA



Source: ABS Catalogue No. 3101.0.

1.3

REGISTRATION OF BIRTHS, DEATHS, MARRIAGES AND DIVORCES

	Live Births (a)	Infant Deaths (a)	Total Deaths (a)	Marriages	Divorces
Financial Years					
1995-96	24 614	140	10 661	10 178	5 195
1996-97	24 744	133	10 586	10 372	4 931
1997-98 p	24 534	125	10 978	10 699	5 112
Calendar years					
1996	24 905	145	10 925	10 294	4 959
1997 p	24 600	125	10 910	10 456	5 046
1998 p	24 708	115	10 667	10 949	5 268
Quarters					
Sep 97 p	6 164	28	3 229	1 458	1 360
Dec 97 p	6 122	42	2 819	3 532	1 320
Mar 98 p	5 737	32	2 422	2 968	1 219
Jun 98 p	6 511	23	2 508	2 741	1 213
Sep 98 p	6 328	34	2 980	1 552	1 463
Dec 98 p	6 132	26	2 757	3 688	1 373

(a) NOTE: With the exception of preliminary data estimates of births and deaths are included by State or Territory of usual residence and year of occurrence. For preliminary estimates births and deaths are included by State or Territory of usual residence and year of registration.

Source: ABS Catalogue No. 3101.0 (Tables 11, 12, 13, 14 & 15).

ANALYSIS OF TABLE 1.3

The number of live births in the December quarter 1998 fell by 196 or 3.1% on the previous quarter and was only 10 or 0.2% more than the number in the same quarter of 1997.

Infant deaths numbered 26 in the December quarter 1998, 8 fewer than in the September quarter 1998, and 16 fewer than in the December quarter of the previous year.

Total deaths fell by 223 or 7.5% from the September quarter 1998, and were 62 or 2.2% lower than the number in the December quarter 1997.

The number of marriages in the December quarter 1998 increased by 137.6% (or 2,136) from the previous quarter, and was 4.4% higher than in the same quarter of 1997.

The number of divorces decreased slightly from 1,463 in the September quarter to 1,373 in the December quarter 1998, a decrease of 6.2%. The number was 4.0% higher than in the December quarter 1997.

1.4

RATES OF BIRTHS, DEATHS, MARRIAGES AND DIVORCES

	Live Births(a)	Infant Mortality(b)	Total Deaths(a)	Marriages(a)	Divorces(a)
Financial Years					
1995–96	14.1	5.7	6.1	5.8	3.0
1996–97	13.9	5.4	5.9	5.8	2.8
1997–98 p	13.5	5.1	6.1	5.9	2.8
Calendar years					
1996	14.1	5.8	6.2	5.8	2.8
1997 p	13.7	5.1	6.1	5.8	2.8
1998 p	13.5	4.7	5.8	6.0	2.9
Quarters					
Sep 97 p	13.7	4.5	7.2	3.2	3.0
Dec 97 p	13.5	6.9	6.2	7.8	2.9
Mar 98 p	12.6	5.6	5.3	6.5	2.7
Jun 98 p	14.3	3.5	5.5	6.0	2.7
Sep 98 p	13.8	5.4	6.5	3.4	3.2
Dec 98 p	13.3	4.2	6.0	8.0	3.0

(a) For financial and calendar years the rate is per 1,000 estimated resident population at 31 December and 30 June, respectively. For quarters, the rate is per 1,000 of the average of the previous and current quarterly populations.

(b) Infant deaths per 1,000 live births.

Source: ABS Catalogue No. 3101.0.

ANALYSIS OF TABLE 1.4

In the December quarter 1998, the infant mortality rate decreased to 4.2 infant deaths per 1,000 live births.

The crude birth rate, crude death rate and crude divorce rate were all lower than in the September quarter 1998, but the crude marriage rate was considerably higher than in the previous quarter.

In the December quarter 1998, the crude marriage rate and crude divorce rate were marginally higher than in the same quarter of the previous year, and the crude birth rate and crude death rate were marginally lower.

For more information regarding tables on Vital statistics, please contact Sue Lee on (08) 9360 5935.

2.1 OVERSEAS ARRIVALS AND DEPARTURES

	SHORT-TERM ARRIVALS.....			LONG-TERM ARRIVALS.....		Total Arrivals
	Permanent Arrivals	West Australian Residents	Overseas Visitors	West Australian Residents	Overseas Visitors	
Financial Years						
1996-97	10 520	334 750	397 610	8 880	11 650	763 410
1997-98	9 750	379 660	402 400	9 340	12 880	814 000
1998-99	10 670	397 820	410 840	7 290	13 390	840 010
Months						
Apr 98	780	29 340	32 150	750	740	63 750
May 98	730	29 430	28 280	600	580	59 610
Jun 98	950	31 540	27 400	730	700	61 330
Jul 98	920	39 030	31 070	600	1 950	73 560
Aug 98	830	38 230	27 450	420	790	67 720
Sep 98	870	32 500	28 810	540	790	63 520
Oct 98	860	49 620	35 710	590	1 010	87 790
Nov 98	810	33 300	38 800	740	640	74 290
Dec 98	920	23 510	47 400	1 140	640	73 610
Jan 99	1 050	44 650	33 950	680	2 090	82 420
Feb 99	910	26 370	41 510	540	2 580	71 910
Mar 99	880	26 070	38 100	580	660	66 290
Apr 99	910	28 620	32 390	450	900	63 260
May 99	910	28 000	27 520	450	640	57 540
Jun 99	790	27 930	28 150	540	710	58 120

	SHORT-TERM DEPARTURES.....			LONG-TERM DEPARTURES.....		Total Departures
	Permanent Departures	West Australian Residents	Overseas Visitors	West Australian Residents	Overseas Visitors	
Financial Years						
1996-97	3 610	339 990	389 530	8 080	6 180	747 390
1997-98	4 000	387 490	402 850	8 500	7 450	810 300
1998-99	3 970	399 610	413 400	8 880	5 020	830 880
Months						
Apr 98	370	32 090	37 100	770	450	70 760
May 98	350	33 080	32 590	730	460	67 200
Jun 98	420	34 750	29 120	650	780	65 720
Jul 98	280	36 280	26 890	660	590	64 690
Aug 98	290	38 300	29 190	810	320	68 900
Sep 98	250	38 790	26 410	580	360	66 390
Oct 98	270	38 950	32 090	620	330	72 260
Nov 98	310	31 580	34 830	630	400	67 750
Dec 98	330	35 170	45 150	780	700	82 130
Jan 99	510	30 710	46 890	1 220	430	79 760
Feb 99	280	26 330	33 360	720	330	61 020
Mar 99	410	32 730	37 620	780	340	71 870
Apr 99	400	25 230	36 300	770	340	63 020
May 99	320	31 920	30 650	750	370	64 000
Jun 99	340	33 620	34 010	590	530	69 080

Source: ABS Unpublished Overseas Arrivals and Departures. Since figures have been rounded to the nearest ten, discrepancies may occur between sums of component items and totals.

ANALYSIS OF TABLE 2.1

The total of 58,120 overseas arrivals in June 1999 was 580 higher than in the previous month and 3,210 lower than in June 1998.

In June 1999, 27,930 Western Australian residents returned from short-term overseas visits, a decrease of 0.3% on May 1999. In June 1999, 28,150 overseas visitors arrived in Western Australia for short-term visits. This was an increase of 2.3% on May 1999.

There were 540 residents returning to Western Australia in June 1999, after a long-term stay overseas. Arrivals of long-term overseas visitors numbered 710 in June 1999. This was an increase of 70 over the previous month, and an increase of 10 on June 1998 figures.

Total departures of residents and visitors numbered 69,080 in June 1999, an increase of 7.9% on the previous month and an increase of 5.1% on June 1998.

The 33,620 short-term departures of Western Australian residents in June 1999 represented an increase of 5.3% on May 1999, and a decrease of 3.3% on June 1998.

2.2 SHORT-TERM OVERSEAS VISITOR ARRIVALS FROM SELECTED COUNTRIES (a)

	COUNTRY OF ORIGIN.....					Total(b)
	New Zealand	UK & Ireland	Indonesia	Japan	Singapore	
Financial Years						
1996-97	26 420	69 460	51 600	33 930	63 950	397 610
1997-98	26 410	81 390	34 380	32 620	73 140	402 400
1998-99	27 490	91 820	28 600	34 530	64 890	410 840
Months						
Apr 98	2 150	6 300	2 250	2 060	7 630	32 150
May 98	2 470	3 820	2 470	2 010	6 400	28 280
Jun 98	2 110	3 540	1 770	1 290	10 110	27 400
Jul 98	3 120	4 040	2 900	3 360	4 080	31 070
Aug 98	1 930	4 010	1 930	4 570	4 310	27 450
Sep 98	2 850	5 460	1 670	2 470	4 100	28 820
Oct 98	2 100	7 070	2 600	2 730	5 490	35 710
Nov 98	1 910	12 680	1 740	3 080	5 150	38 810
Dec 98	3 190	12 430	2 600	3 630	7 440	47 400
Jan 99	1 530	8 880	4 200	2 290	3 000	33 950
Feb 99	1 670	10 670	2 420	3 500	6 100	41 510
Mar 99	2 610	10 010	1 970	3 580	5 710	38 100
Apr 99	3 060	7 150	2 050	2 520	4 760	32 380
May 99	1 480	4 670	3 130	1 670	5 370	27 520
Jun 99	2 050	4 770	1 390	1 130	9 380	28 150

(a) Comprises travellers whose intended stay is less than twelve months.

(b) Total includes countries not listed in this table.

Source: ABS Unpublished Overseas Arrivals and Departures .

ANALYSIS OF TABLE 2.2

Short-term visitor arrivals from Singapore increased by 4010 in June 1999 on May 1999, and decreased by 730 on June 1998 and represented 33.3% of all short-term visitor arrivals.

Short-term visitor arrivals from the UK and Ireland increased by 2.1% previously on May 1999, and increased by 34.7% from June 1998 and represented 16.9% of all short-term visitor arrivals.

2.3

SHORT-TERM OVERSEAS VISITOR ARRIVALS BY AIR, FOR HOLIDAY (a)

COUNTRY OF ORIGIN.....

	<i>New Zealand</i>	<i>UK & Ireland</i>	<i>Indonesia</i>	<i>Japan</i>	<i>Malaysia</i>	<i>Singapore</i>	<i>Thailand</i>	<i>United States</i>	<i>Total(b)</i>
Financial Years									
1996-97	6 670	24 050	33 870	27 870	23 600	45 350	10 230	2 590	215 820
1997-98	7 830	27 660	19 580	26 650	23 920	50 470	5 880	3 520	205 550
1998-99	7 710	34 590	12 770	24 560	17 220	41 710	4 720	3 690	192 550
Months									
Apr 98	800	2 220	1 340	1 610	1 710	5 230	770	250	16 560
May 98	720	1 280	1 170	1 360	2 480	4 530	230	290	13 900
Jun 98	710	1 160	1 080	1 110	1 110	8 040	160	330	15 780
Jul 98	800	1 700	920	2 150	900	1 480	170	170	11 570
Aug 98	300	1 130	630	2 770	1 150	2 600	270	260	11 620
Sep 98	940	1 710	580	1 500	1 300	2 290	340	210	11 550
Oct 98	620	2 520	1 310	1 730	1 160	3 630	410	270	16 860
Nov 98	470	4 820	890	2 460	1 110	3 890	200	350	19 030
Dec 98	890	3 770	1 760	2 870	1 300	5 890	660	390	24 000
Jan 99	550	3 430	2 110	1 600	880	1 250	170	380	14 160
Feb 99	520	5 170	780	2 530	1 940	3 230	170	480	19 490
Mar 99	560	4 240	1 030	2 990	1 360	4 030	370	460	19 510
Apr 99	940	2 760	750	1 930	1 910	3 040	1 350	250	16 210
May 99	440	1 590	1 480	1 150	2 960	3 640	380	150	14 070
Jun 99	680	1 750	550	880	1 250	6 720	230	300	14 470

(a) Comprises travellers whose intended stay is less than twelve months.

(b) Total includes countries not listed in this table.

Source: ABS Unpublished Overseas Arrivals and Departures.

ANALYSIS OF TABLE 2.3

A total of 14,470 short-term overseas visitors arrived by air for holidays in Western Australia in June 1999, an increase of 2.8% on May 1999, and a decrease of 8.3% on June 1998.

Short-term visitor arrivals by air for holiday from Singapore increased by 3,080 in June 1999 on May 1999, and represented 46.4% of these holiday makers into the state.

2.4

SHORT-TERM DEPARTURES OF RESIDENTS TO SELECTED DESTINATIONS (a)

COUNTRY OF DESTINATION.....

	New Zealand	UK & Ireland	Indonesia	Malaysia	Singapore	Total(b)
Financial Years						
1996-97	26 580	50 320	89 030	23 620	26 770	339 990
1997-98	30 360	54 190	103 090	25 820	34 520	387 490
1998-99	29 100	51 870	105 920	28 190	41 040	399 610
Months						
Apr 98	3 390	4 490	6 690	2 160	2 590	32 090
May 98	1 470	6 460	6 920	1 520	2 790	33 080
Jun 98	1 530	6 230	7 960	2 350	3 210	34 750
Jul 98	2 420	5 100	10 700	2 640	2 880	36 280
Aug 98	1 460	6 330	11 350	2 380	3 260	38 300
Sep 98	3 110	4 400	12 740	2 310	2 980	38 790
Oct 98	2 350	4 730	13 020	2 970	3 370	38 950
Nov 98	2 340	3 460	9 810	2 110	3 320	31 580
Dec 98	4 250	4 270	8 310	2 500	2 260	35 170
Jan 99	2 480	1 600	8 150	2 200	4 670	30 720
Feb 99	2 570	2 940	6 600	2 000	3 440	26 330
Mar 99	3 250	3 920	6 660	2 590	4 970	32 730
Apr 99	2 420	3 060	5 650	2 510	2 480	25 220
May 99	1 000	6 200	6 270	2 110	3 100	31 920
Jun 99	1 450	5 880	6 650	1 820	4 330	33 620

(a) Comprises travellers whose intended stay is less than twelve months.

(b) Total includes countries not listed in this table.

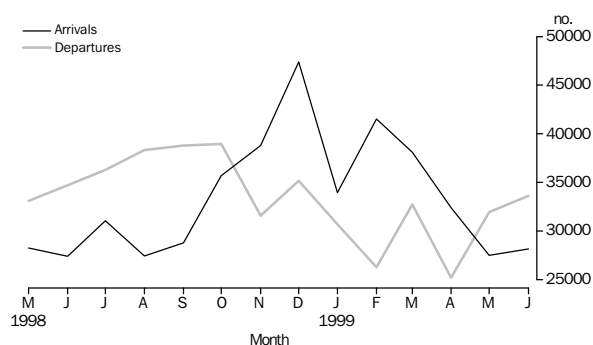
Source: ABS Unpublished Overseas Arrivals and Departures.

ANALYSIS OF TABLE 2.4

In June 1999, 33,620 Western Australian residents departed for short-term periods overseas, an increase of 5.3% on May 1999, and a 3.3% decrease on June 1998.

Short-term departures of residents to Malaysia decreased by 22.6% from the month of June 1998.

SHORT-TERM ARRIVALS OF OVERSEAS VISITORS AND DEPARTURES OF RESIDENTS



Source: ABS Unpublished Overseas Arrivals and Departures.

2.5

SHORT-TERM DEPARTURES OF RESIDENTS BY AIR, FOR HOLIDAY (a)

COUNTRY OF DESTINATION.....

	New Zealand	UK & Ireland	Indonesia	Malaysia	Singapore	Thailand	United States	Total (b)
Financial Years								
1996-97	10 860	23 760	72 640	10 660	13 480	9 790	9 540	186 540
1997-98	12 500	25 910	85 760	12 820	19 560	18 320	11 440	222 180
1998-99	11 430	19 790	88 350	15 580	21 970	22 040	9 220	222 970
Months								
Apr 98	1 340	1 820	5 510	1 370	1 670	2 400	910	18 300
May 98	490	3 010	5 530	720	1 500	3 020	1 070	18 650
Jun 98	350	3 300	6 320	1 220	1 490	2 090	1 250	19 940
Jul 98	1 060	2 430	8 810	1 520	1 420	3 040	1 080	22 640
Aug 98	720	2 880	9 140	1 340	1 920	2 540	480	22 050
Sep 98	1 570	1 550	10 650	1 070	1 690	2 430	930	22 920
Oct 98	1 010	1 640	11 460	1 800	1 950	2 880	850	24 390
Nov 98	430	1 000	8 610	1 050	1 320	970	480	16 530
Dec 98	1 180	1 570	6 970	1 350	950	970	1 270	18 300
Jan 99	1 000	560	6 760	1 300	2 690	1 520	460	17 200
Feb 99	1 060	1 290	5 590	990	1 830	1 340	350	14 600
Mar 99	1 670	1 200	5 520	1 750	3 250	1 700	580	18 350
Apr 99	1 270	1 350	4 800	1 550	1 260	1 590	720	14 270
May 99	390	2 370	5 000	1 140	1 590	1 710	990	16 390
Jun 99	** 50	2 520	5 200	690	2 300	1 330	1 140	16 900

(a) Comprises travellers whose intended stay is less than twelve months.

(b) Total includes countries not listed in this table.

** Estimates contain Relative Standard Error greater than 50 %. Refer to Explanatory Notes and Standard Error Section of Catalogue no. 3401.0

Source: ABS Unpublished Overseas Arrivals and Departures.

ANALYSIS OF TABLE 2.5

There were 16,900 short-term departures by air of Western Australian residents for holidays abroad in June 1999. This was 3.1% more than in May 1999 and 15.2% less than in June 1998.

In June 1999, 2,520 Western Australians departed for holidays in the United Kingdom and Ireland, an increase of 6.3% over the previous month.

Indonesia continues to be the favoured holiday destination for Western Australians, with 30.8% of all short-term departures of residents by air in June 1999.

For more information regarding Overseas Arrivals and Departures, please contact Carolann Hoad on (08) 9360 5199.

2.6 TOURIST ACCOMMODATION

HOTELS, MOTELS, GUEST HOUSES AND SERVICED APARTMENTS....

	<i>Establishments</i>	<i>Guest rooms</i>	<i>Employment</i>	<i>Room occupancy rates</i>	<i>Guest arrivals</i>	<i>Takings from accommodation</i>
	Number	Number	Persons	%	'000	\$'000
Jan 98				59	201	29 620
Feb 98				57	172	25 017
Mar 98	294	16 596	9 685	59	191	28 190
Apr 98				56	203	26 415
May 98				57	188	28 348
Jun 98	293	16 643	9 678	50	168	23 029
Jul 98				57	209	28 897
Aug 98				59	215	30 078
Sep 98	298	17 015	9 950	63	234	29 762
Oct 98				62	233	31 370
Nov 98				59	204	29 153
Dec 98	300	17 317	9 961	52	213	26 597
Jan 99				54	212	27 913
Feb 99				57	187	26 346
Mar 99	304	17 517	9 962	56	198	28 527

Source: ABS Product No. 8635.5.40.001. (The December quarter 1997 issue of *Tourist Accommodation, Western Australia*, ABS Catalogue No. 8635.5, was the final issue of this publication).

Note: The scope of the ABS quarterly Survey of Tourist Accommodation (STA) has changed since the December quarter 1997. Some units will have been reclassified and as a result, data will not be strictly comparable with previously published data for particular accommodation types.

From the March quarter 1998, only those in-scope establishments with 15 or more rooms or units are covered by the survey.

From the March quarter 1998, survey results are aggregated to Tourism Regions as defined by relevant State and Territory Tourist Commissions or equivalent organisations.

From the March quarter 1998, the data quoted above for Establishments, Guest rooms and Employment are quarterly.

As part of the future collection strategy of the STA, significant caravan parks, visitor hostels and remaining holiday flats, units and houses will be surveyed triennially, commencing with a year 2000 reference year.

For more information regarding the changes to the STA and the data available from this collection, please refer to the ABS publication Catalogue No. 8635.0.

For more information relating to Tourist Accommodation, please contact Pam Prince on 9360 5207.

3.1

LABOUR FORCE STATUS (AGED 15 YEARS AND OVER): Seasonally Adjusted

	<i>Employed full-time</i>	<i>Total employed</i>	<i>Total unemployed</i>	<i>Unemployment rate</i>	<i>Participation rate</i>
	'000	'000	'000	%	%
Males					
Jun 98	446.0	504.8	44.8	8.2	76.9
Jul 98	446.2	502.4	42.6	7.8	76.1
Aug 98	447.4	504.7	41.4	7.6	76.2
Sep 98	447.3	509.8	41.5	7.5	76.7
Oct 98	446.9	509.0	41.9	7.6	76.6
Nov 98	445.8	507.6	41.7	7.6	76.2
Dec 98	447.6	510.4	42.8	7.7	76.6
Jan 99	446.8	510.4	40.9	7.4	76.2
Feb 99	444.7	508.0	40.9	7.5	75.7
Mar 99	446.2	512.2	37.3	6.8	75.6
Apr 99	447.5	513.9	39.4	7.1	76.0
May 99	440.5	508.6	36.0	6.6	74.7
Jun 99	442.6	507.9	38.7	7.1	74.9
Jul 99	445.4	510.5	36.8	6.7	74.8
Aug 99	448.4	515.3	37.2	6.7	75.4
Females					
Jun 98	204.4	384.9	24.6	6.0	57.2
Jul 98	202.7	387.2	27.3	6.6	57.8
Aug 98	204.4	384.8	25.5	6.2	57.1
Sep 98	197.9	386.1	28.5	6.9	57.6
Oct 98	201.9	386.8	25.3	6.1	57.2
Nov 98	203.0	385.3	26.4	6.4	57.0
Dec 98	205.2	385.2	26.3	6.4	56.9
Jan 99	203.8	382.9	26.5	6.5	56.5
Feb 99	200.0	382.1	28.9	7.0	56.6
Mar 99	195.3	383.3	28.5	6.9	56.6
Apr 99	201.1	382.3	32.6	7.9	56.9
May 99	199.7	384.6	26.1	6.4	56.3
Jun 99	206.9	393.1	23.3	5.6	57.0
Jul 99	206.7	393.4	25.2	6.0	57.2
Aug 99	206.1	389.6	25.9	6.2	56.7
Persons					
Jun 98	650.4	889.7	69.4	7.2	67.0
Jul 98	648.9	889.6	69.9	7.3	66.9
Aug 98	651.8	889.6	66.9	7.0	66.6
Sep 98	645.3	895.9	70.0	7.2	67.2
Oct 98	648.8	895.8	67.3	7.0	66.8
Nov 98	648.7	892.9	68.1	7.1	66.6
Dec 98	652.8	895.6	69.1	7.2	66.7
Jan 99	650.5	893.3	67.4	7.0	66.3
Feb 99	644.7	890.1	69.8	7.3	66.1
Mar 99	641.5	895.6	65.8	6.8	66.1
Apr 99	648.6	896.2	72.0	7.4	66.5
May 99	640.2	893.2	62.1	6.5	65.5
Jun 99	649.5	901.0	61.9	6.4	65.9
Jul 99	652.0	903.9	62.0	6.4	66.0
Aug 99	654.6	904.8	63.1	6.5	66.0

Source: ABS Catalogue No. 6202.0.

ANALYSIS OF TABLE 3.1

The seasonally adjusted unemployment rate increased to 6.5 percent in August 1999.

The seasonally adjusted number of persons unemployed increased by 1,100 to 63,100, while the number of employed persons rose by 900 to 904,800.

Western Australia's seasonally adjusted participation rate for August 1999 remained steady at 66.0 percent and continues to be the highest of all the States.

3.2 LABOUR FORCE STATUS (AGED 15 YEARS AND OVER): Trend (a)

	Employed full-time	Total employed	Total unemployed	Unemployment rate	Participation rate
	'000	'000	'000	%	%
Males					
Jun 98	446.3	504.9	41.1	7.5	76.4
Jul 98	446.6	505.4	41.9	7.7	76.4
Aug 98	446.9	506.1	42.3	7.7	76.5
Sep 98	446.9	507.1	42.4	7.7	76.5
Oct 98	446.9	508.1	42.2	7.7	76.5
Nov 98	446.9	509.0	41.9	7.6	76.4
Dec 98	446.7	509.8	41.5	7.5	76.3
Jan 99	446.5	510.3	41.0	7.4	76.2
Feb 99	445.9	510.5	40.1	7.3	75.9
Mar 99	445.2	510.5	39.1	7.1	75.7
Apr 99	444.6	510.5	38.3	7.0	75.4
May 99	444.3	510.6	37.7	6.9	75.2
Jun 99	444.4	510.8	37.4	6.8	75.1
Jul 99	444.8	511.2	37.1	6.8	75.0
Aug 99	445.4	511.8	36.9	6.7	74.9
Females					
Jun 98	201.8	382.7	26.8	6.5	57.2
Jul 98	202.1	385.0	26.5	6.4	57.4
Aug 98	202.3	386.3	26.4	6.4	57.4
Sep 98	202.5	386.6	26.3	6.4	57.4
Oct 98	202.7	386.2	26.2	6.4	57.2
Nov 98	202.6	385.4	26.4	6.4	57.0
Dec 98	202.3	384.3	27.0	6.6	56.8
Jan 99	201.5	383.2	27.7	6.7	56.7
Feb 99	200.6	382.8	28.3	6.9	56.6
Mar 99	200.1	383.3	28.5	6.9	56.6
Apr 99	200.6	384.8	28.1	6.8	56.7
May 99	201.9	386.8	27.3	6.6	56.7
Jun 99	203.6	388.9	26.3	6.3	56.8
Jul 99	205.3	390.7	25.5	6.1	56.9
Aug 99	206.9	392.1	24.7	5.9	56.9
Persons					
Jun 98	648.2	887.6	67.9	7.1	66.8
Jul 98	648.7	890.3	68.4	7.1	66.9
Aug 98	649.1	892.5	68.6	7.1	66.9
Sep 98	649.4	893.7	68.6	7.1	66.9
Oct 98	649.6	894.3	68.4	7.1	66.8
Nov 98	649.5	894.3	68.3	7.1	66.7
Dec 98	649.0	894.0	68.5	7.1	66.5
Jan 99	647.9	893.5	68.7	7.1	66.4
Feb 99	646.4	893.2	68.4	7.1	66.3
Mar 99	645.3	893.8	67.7	7.0	66.1
Apr 99	645.1	895.3	66.4	6.9	66.0
May 99	646.2	897.4	65.0	6.8	66.0
Jun 99	648.0	899.7	63.7	6.6	65.9
Jul 99	650.1	901.9	62.6	6.5	65.9
Aug 99	652.3	904.0	61.7	6.4	65.9

(a) Trend estimates for the previous months have been revised.

Source: ABS Catalogue No. 6202.0.

ANALYSIS OF TABLE 3.2

The trend estimate of the unemployment rate decreased to 6.4% in August 1999.

For more information regarding these tables, please contact Information Inquiries on (08) 9360 5140.

3.3

AVERAGE WEEKLY EARNINGS OF EMPLOYEES: Trend

	FULL TIME ADULTS.....		ALL PERSONS
	<i>Ordinary time earnings</i>	<i>Total earnings</i>	<i>Total earnings</i>
	\$	\$	\$
Males			
20 Feb 98	790.60	852.00	734.20
15 May 98	803.30	866.30	742.30
21 Aug 98	809.80	872.80	740.80
20 Nov 98	808.90	870.00	734.10
19 Feb 99	807.40	866.00	728.10
21 May 99	809.10	864.90	725.10
Females			
20 Feb 98	609.70	621.80	411.70
15 May 98	617.00	629.70	409.30
21 Aug 98	625.60	638.30	411.00
20 Nov 98	632.40	644.70	414.80
19 Feb 99	638.60	650.80	417.90
21 May 99	644.10	656.30	419.80
Persons			
20 Feb 98	723.90	767.10	568.70
15 May 98	736.20	781.20	572.40
21 Aug 98	744.40	789.60	573.00
20 Nov 98	746.60	790.40	572.10
19 Feb 99	747.80	790.00	571.40
21 May 99	750.90	791.30	572.00

Source: ABS Catalogue No. 6302.0.

3.4

INDUSTRIAL DISPUTES CAUSING STOPPAGE OF WORK

WORKERS INVOLVED.....

	<i>Number of Disputes</i>	<i>Directly</i>	<i>Indirectly</i>	<i>Total</i>	<i>Working days lost</i>
	Number	'000	'000	'000	'000
Calendar Year					
1996	54	36.2	0.0	36.2	47.3
1997	71	30.9	0.9	31.7	60.1
1998	78	28.6	0.1	28.8	61.2
Months					
Apr 98	6	r 3.5	0.0	r 3.5	r 4.4
May 98	r 6	r 4.1	0.0	r 4.1	r 2.3
Jun 98	9	4.0	0.0	4.0	5.8
Jul 98	3	0.4	0.0	0.4	0.5
Aug 98	10	7.0	0.0	7.0	11.7
Sep 98	10	4.1	0.0	4.1	13.2
Oct 98	12	3.3	0.0	3.3	5.3
Nov 98	18	5.1	0.0	5.1	5.7
Dec 98	8	1.7	0.0	1.7	4.4
Jan 99	n.p.	0.6	0.0	0.6	1.2
Feb 99	12	1.1	0.0	1.1	1.8
Mar 99	14	1.9	0.0	1.9	3.4
Apr 99	6	0.7	0.0	0.7	2.6
May 99	r 16	r 3.4	r 0.1	r 3.5	r 2.9
Jun 99	11	2.6	0.0	2.6	4.7

Source: Industrial Disputes, Unpublished Data.

Note: The waterfront dispute which commenced on 7 April 1998 has been excluded from the industrial disputes statistics in this publication, because the industrial action that took place did not constitute an 'industrial dispute' as defined by the ABS for purposes of collecting and compiling these statistics.

In ABS industrial disputes statistics, an industrial dispute is defined as a withdrawal from work by a group of employees (i.e. a strike), or a refusal by an employer or a number of employers to permit some or all of their employees to work (i.e. a lockout), each withdrawal or refusal being made in order to enforce a demand, to resist a demand, or to express a grievance. That is, the statistics cover employee strikes and employer lockouts, but do not cover other action due to labour disputes. (See *Industrial Disputes, Australia*, cat no. 6321.0 Explanatory Notes and Glossary for more details.)

3.5

WAGE AND SALARY EARNERS: INDUSTRY-SECTOR

	NUMBER OF EMPLOYEES.....						GROSS EARNINGS
	Nov	Feb	May	Aug	Nov	Feb	Mar qtr
	1997	1998	1998	1998	1998	1999	1999
	'000	'000	'000	'000	'000	'000	\$m
Industry							
Mining	30.5	28.2	29.3	29.6	27.2	30.5	517.3
Manufacturing	65.5	65.6	66.5	70.1	70.9	71.8	698.3
Electricity, gas and water supply	6.9	6.8	6.5	6.7	6.3	6.4	83.6
Construction	35.1	37.6	43.0	47.9	45.7	43.8	461.1
Wholesale trade	42.3	40.3	41.2	37.2	35.8	30.6	295.2
Retail trade	110.4	102.6	103.7	105.3	102.6	107.1	492.9
Accommodation, cafes & restaurants	41.6	40.5	38.6	49.1	51.7	57.3	271.3
Transport and storage	24.4	22.7	24.4	26.4	29.5	28.0	277.1
Communication services	9.6	9.5	9.6	9.5	8.9	9.1	111.6
Finance & insurance	23.3	27.7	29.7	29.9	29.4	28.7	235.6
Property & business services	83.7	86.6	101.0	89.0	84.7	84.9	602.7
Government administration and defence	31.9	31.9	31.5	28.3	29.3	29.1	266.9
Education	67.3	61.8	64.4	67.8	64.0	63.5	480.8
Health & community services	70.8	71.1	72.4	74.5	75.6	82.6	572.9
Cultural & recreational services	15.5	15.9	19.6	19.3	15.8	18.6	102.6
Personal & other services	23.9	22.8	24.4	26.0	28.2	26.2	173.0
All industries (a)	684.5	673.5	707.4	718.1	707.2	720.1	5 658.4
Sector							
Private	535.8	530.6	561.6	570.5	561.8	574.6	4 325.2
Public	148.8	142.8	145.8	147.7	145.4	145.5	1 333.2

	Nov 1998.....			Feb 1999.....		
	Full-time	Part-time	Persons	Full-time	Part-time	Persons
	'000	'000	'000	'000	'000	'000
Industry						
Mining	26.2	* 1.0	27.2	29.6	* 0.9	30.5
Manufacturing	64.9	* 5.9	70.9	64.8	* 7.0	71.8
Electricity, gas and water supply	6.1	0.2	6.3	6.2	0.2	6.4
Construction	41.6	* 4.0	45.7	41.1	* 2.6	43.8
Wholesale trade	26.3	* 9.5	35.8	23.2	* 7.5	30.6
Retail trade	44.3	58.3	102.6	48.8	58.3	107.1
Accommodation, cafes & restaurants	* 22.8	28.9	51.7	23.5	33.8	57.3
Transport and storage	23.6	* 5.9	29.5	23.3	* 4.7	28.0
Communication services	7.5	1.4	8.9	7.7	1.4	9.1
Finance & insurance	22.7	* 6.7	29.4	20.9	* 7.8	28.7
Property & business services	48.9	* 35.8	84.7	49.0	* 36.0	84.9
Government administration and defence	23.5	5.8	29.3	23.5	5.6	29.1
Education	38.8	25.2	64.0	39.2	24.3	63.5
Health & community services	34.9	40.7	75.6	40.6	41.9	82.6
Cultural & recreational services	6.9	* 8.9	15.8	7.3	* 11.3	18.6
Personal & other services	17.6	10.6	28.2	17.0	9.2	26.2
All industries (a)	458.3	248.9	707.2	467.5	252.6	720.1
Sector						
Private	354.7	207.1	561.8	363.3	211.3	574.6
Public	103.5	41.9	145.4	104.2	41.3	145.5

(a) Includes employees of government agencies classified to Agriculture, forestry and fishing.

Source: ABS Catalogue No. 6248.0.

4.1

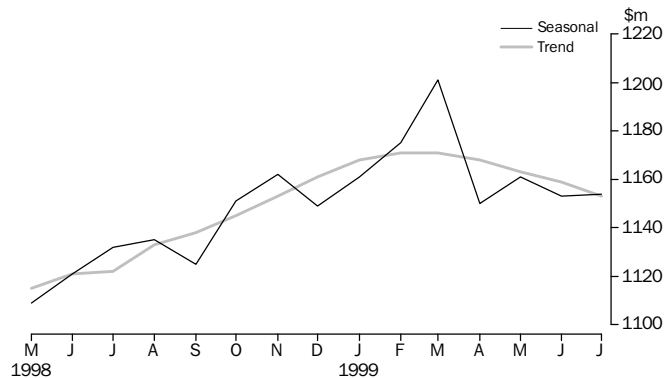
MONTHLY RETAIL TURNOVER

	Food	Department stores	Clothing and soft goods	Household goods	Recreational goods
	\$m	\$m	\$m	\$m	\$m
Months					
May 98	482.3	100.5	52.2	r 171.5	r 47.5
Jun 98	451.4	92.0	49.3	r 179.4	r 46.8
Jul 98	495.6	106.7	54.0	r 158.3	r 53.8
Aug 98	490.6	90.6	48.5	r 151.7	r 50.7
Sep 98	490.0	92.3	49.9	r 149.4	r 51.5
Oct 98	519.6	108.9	55.7	r 174.3	r 54.1
Nov 98	493.6	116.0	56.1	r 170.7	r 56.0
Dec 98	584.9	195.2	74.8	r 216.2	r 83.5
Jan 99	517.5	92.7	56.0	r 160.1	r 50.8
Feb 99	474.0	75.0	45.6	r 158.1	r 50.5
Mar 99	r 518.6	92.3	53.3	r 170.2	r 54.9
Apr 99	r 505.2	90.5	56.0	r 158.6	r 49.1
May 99	r 491.1	110.4	64.2	r 176.8	r 51.0
Jun 99	r 474.0	91.3	57.5	r 175.9	r 50.0
Jul 99	r 506.9	102.0	59.7	r 179.9	r 47.3

	Hospitality and services	Other	Total	Seasonally adjusted	Trend estimates
	\$m	\$m	\$m	\$m	\$m
Months					
May 98	r 142.5	r 97.3	r 1 093.8	r 1 109.1	r 1 115.4
Jun 98	r 130.6	r 95.4	r 1 044.9	r 1 120.7	r 1 120.6
Jul 98	r 146.8	r 100.5	r 1 115.6	r 1 132.4	r 1 121.5
Aug 98	r 150.8	r 98.0	r 1 081.0	r 1 135.0	r 1 132.6
Sep 98	r 150.7	r 106.5	r 1 090.2	r 1 125.1	r 1 138.3
Oct 98	r 172.3	r 116.7	r 1 201.5	r 1 151.3	r 1 145.1
Nov 98	r 160.3	r 121.0	r 1 173.7	r 1 161.9	r 1 152.9
Dec 98	r 184.3	r 169.7	r 1 508.6	r 1 148.8	r 1 160.9
Jan 99	r 156.9	r 110.5	r 1 144.4	r 1 161.0	r 1 167.7
Feb 99	r 148.7	r 102.2	r 1 054.1	r 1 175.1	r 1 171.2
Mar 99	r 153.3	r 111.7	r 1 154.2	r 1 201.1	r 1 170.7
Apr 99	r 149.1	r 100.1	r 1 108.6	r 1 150.3	r 1 167.7
May 99	r 144.5	r 99.9	r 1 137.8	r 1 161.2	r 1 163.3
Jun 99	r 135.6	r 97.0	r 1 081.3	r 1 153.4	r 1 158.7
Jul 99	r 150.8	r 99.2	r 1 145.8	r 1 153.9	r 1 152.9

Source: ABS Catalogue No. 8501.0.

MONTHLY RETAIL TURNOVER



Source: ABS Catalogue No. 8501.0.

5.1

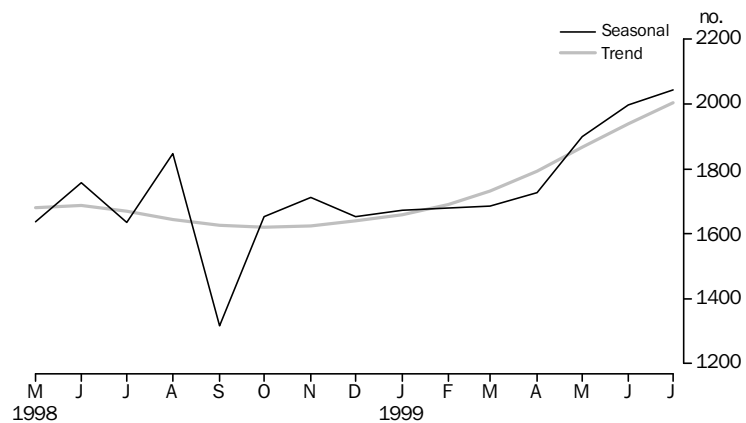
DWELLING UNITS APPROVED

	NEW HOUSES.....		NEW OTHER RESIDENTIAL BUILDINGS.....		TOTAL (a).....	
	Dwelling Units	Value	Dwelling Units	Value	Dwelling Units	Value
	No.	\$m	No.	\$m	No.	\$m
Financial years						
1996-97	13 632	1 348.9	2 013	175.8	15 742	2 901.8
1997-98	15 828	1 634.2	2 526	222.0	18 460	2 943.8
1998-99	17 399	1 898.5	2 932	294.8	20 506	3 488.5
Months						
May 98	1 504	151.9	288	43.6	1 794	318.3
Jun 98	1 831	183.3	218	18.4	2 054	286.7
Jul 98	1 548	163.2	151	16.3	1 707	282.8
Aug 98	1 483	155.7	248	32.8	1 735	256.1
Sep 98	1 256	134.4	150	15.1	1 413	229.9
Oct 98	1 461	160.6	169	15.2	1 634	288.1
Nov 98	1 401	149.5	229	28.5	1 649	272.4
Dec 98	1 391	155.4	231	24.7	1 641	270.8
Jan 99	1 148	127.4	157	20.9	1 307	365.0
Feb 99	1 290	140.7	253	28.9	1 547	344.0
Mar 99	1 606	176.3	237	19.1	1 921	308.1
Apr 99	1 424	154.5	189	20.4	1 625	261.6
May 99	1 630	177.0	306	26.7	1 941	282.7
Jun 99	1 761	203.8	612	46.2	2 386	327.0
Jul 99	1 682	182.2	344	43.8	2 038	345.0

(a) Includes alterations, additions, conversions and non-residential buildings.

Source: ABS Catalogue No. 8731.5.

TOTAL DWELLING UNITS APPROVED



Source: ABS Catalogue No. 8731.5.

5.2

VALUE OF NON-RESIDENTIAL BUILDING APPROVED

	<i>Private</i>	<i>Public</i>	<i>Total</i>
	\$m	\$m	\$m
Financial Years			
1996-97	773.9	430.0	1204.5
1997-98	706.7	193.3	899.8
1998-99	883.7	188.6	1 072.3
Months			
May 98	74.6	31.5	106.1
Jun 98	62.4	8.8	71.1
Jul 98	65.5	20.3	85.9
Aug 98	39.9	11.4	51.3
Sep 98	60.8	3.0	63.8
Oct 98	78.0	14.4	92.4
Nov 98	64.0	13.0	77.0
Dec 98	54.4	17.1	71.5
Jan 99	163.8	33.3	197.1
Feb 99	121.3	34.9	156.3
Mar 99	81.6	5.1	86.6
Apr 99	62.1	6.2	68.3
May 99	48.5	12.7	61.2
Jun 99	43.8	17.2	60.9
Jul 99	55.1	39.0	94.1

Source: ABS Catalogue No. 8731.5.

For more information regarding Building Approvals, please contact Pam Prince on (08) 9360 5207.

5.3

SELECTED HOUSING PRICE INDEXES: PERTH

	<i>Materials used in house building</i>	<i>Established homes</i>	<i>Project homes</i>
Financial Years			
1996-97	115.3	109.2	101.3
1997-98	115.9	113.3	102.2
1998-99	116.1	118.9	106.1
Quarters			
Mar 98	115.7	113.7	102.5
Jun 98	115.9	114.4	103.6
Sep 98	116.1	115.4	104.9
Dec 98	116.3	118.1	105.8
Mar 99	116.0	120.8	106.2
Jun 99	115.9	121.4	107.5

Base of each index: 1989-90 = 100.0.

Source: ABS Catalogue Nos. 6408.0 and 6416.0.

5.4

PRICE INDEX OF MATERIALS USED IN BUILDING OTHER THAN HOUSE BUILDING: PERTH

SPECIAL SERIES.....

	<i>All groups</i>	<i>All Electrical materials</i>	<i>All Mechanical services</i>	<i>All Plumbing materials</i>
Financial Years				
1996-97	114.6	110.6	113.3	119.2
1997-98	114.6	109.3	113.4	124.6
1998-99	114.1	107.8	116.1	124.3
Quarters				
Mar 98	114.2	107.2	113.2	124.6
Jun 98	114.2	109.2	113.8	124.1
Sep 98	114.2	107.9	115.0	124.0
Dec 98	114.2	107.4	116.6	124.0
Mar 99	113.9	107.9	116.3	124.8
Jun 99	114.1	107.8	116.5	124.5

SELECTED MAJOR BUILDING MATERIALS.....

	<i>Structural timber</i>	<i>Clay bricks</i>	<i>Ready mixed concrete</i>	<i>Structural steel</i>	<i>Aluminium windows</i>
Financial Years					
1996-97	106.6	124.1	120.1	113.9	117.0
1997-98	106.8	127.8	117.4	116.5	117.9
1998-99	105.0	131.4	114.5	117.5	115.0
Quarters					
Mar 98	106.4	127.6	116.8	116.7	117.0
Jun 98	106.1	128.8	116.8	116.9	117.0
Sep 98	106.5	131.4	115.9	117.6	117.0
Dec 98	104.6	131.4	115.0	117.4	113.8
Mar 99	105.0	131.4	113.3	117.4	113.8
Jun 99	103.9	131.2	113.9	117.4	115.2

Base of each index 1989-90 = 100.0.

Source: ABS Catalogue No. 6407.0.

For more information regarding these tables, please contact Peter Hodgson on (08) 9360 5922.

6.1

LIVESTOCK SLAUGHTERED ('000)

	CATTLE.....			OTHER.....			
	Bulls, bullocks, steers	Cows, heifers	Total (excluding calves)	Calves	Sheep	Lambs	Pigs
Financial Years							
1996-97	192.3	214.5	406.8	5.6	2 635.2	2 081.2	550.2
1997-98	196.0	252.1	448.1	5.6	2 717.4	1 856.5	550.0
1998-99	194.1	231.8	424.8	6.0	1 836.0	1 994.0	552.4
Quarters							
Mar 98	46.0	76.5	122.5	1.7	738.6	377.3	136.4
Jun 98	45.3	56.4	101.7	1.3	526.3	423.9	147.9
Sep 98	44.6	59.7	104.3	1.5	380.5	469.7	144.0
Dec 98	65.2	62.9	128.1	1.5	476.3	590.0	133.3
Mar 99	r 44.4	r 58.3	r 102.7	r 1.5	r 551.7	r 454.4	r 138.1
Jun 99	39.9	50.9	90.7	1.5	427.8	479.9	137.0

Note: From June 1998, the collection frequency of this information changed from monthly to quarterly.

Source: ABS Catalogue No. 7215.0.

6.2

MEAT PRODUCED (a)(Tonnes Carcass Weight)

	Beef	Veal	Mutton	Lamb	Pig meat
Financial Years					
1996-97	91 369	319	52 164	35 701	38 837
1997-98	102 482	312	56 442	33 581	35 499
1998-99	102 670	406	37 740	37 471	36 513
Quarters					
Mar 98	27 546	89	15 029	6 868	8 433
Jun 98	22 557	73	10 785	7 814	9 852
Sep 98	24 477	90	7 620	8 661	9 542
Dec 98	32 072	102	10 155	11 185	8 474
Mar 99	r 25 092	r 106	r 11 361	r 8 643	r 8 937
Jun 99	21 029	108	r 8 643	8 982	9 560

(a) Red meat is shown in carcass weight and excludes offal.

Note: From June 1998, the collection frequency of this information changed from monthly to quarterly.

Source: ABS Catalogue No. 7215.0.

For more information regarding these tables, please contact Ann Soutar on

(08) 9360 5180.

6.3

WOOL RECEIVALS AND LIVE SHEEP EXPORTS

	RECEIVALS OF TAXABLE WOOL BY BROKERS AND DEALERS(a)		EXPORT OF LIVE SHEEP (b).....		
	Bales '000	Tonnes	Quantity '000	Gross Value \$'000	Gross Weight '000t
Financial Years					
1996-97	909 768	160 021	3 747.5	136 613	r 188.5
1997-98 p	699 492	r 153 885	r 3 283.9	130 798	167.0
1998-99 p	684 610	145 751	4 033.1	149 027	206.7
Quarters					
Mar 98 p	195 422	41 001	880.8	34 558	45.0
Jun 98 p	100 347	23 253	858.1	35 587	42.7
Sep 98 p	191 427	39 785	854.2	32 928	43.9
Dec 98 p	191 210	41 572	1 187.2	44 067	r 62.2
Mar 99 p	198 316	r 40 322	1 120.9	40 845	r 58.0
Jun 99 p	103 657	24 073	870.8	r 31 153	42.5

(a) Source: National Council of Wool Selling Brokers.

(b) Source: ABS FASTTRACCS Service.

Note: From June 1998, the collection frequency of this information changed from monthly to quarterly.

For more information regarding this table, please contact Information Inquiries on (08) 9360 5140.

6.4

ENERGY PRODUCTION

	Coal(a)	Electricity generated	Gas for distribution(b)	Crude oil(c)(d)	Natural gas(d)
	'000 tonnes	million kWh	million MJ	mega-litres	million m ³
Financial Years					
1996-97	5 557	16 738	204 257	15 974	16 713
1997-98	5 709	17 203	230 201	17 561 p	17 707 p
1998-99	5 797	16 718	228 774	13 823 p	16 941 p
Quarters					
Mar 98	1 405	4 608	57 285	3 975 p	4 432 p
Jun 98	1 359	4 169	58 241	4 533 p	4 263 p
Sep 98	1 249	4 259	58 576	4 619 p	4 822 p
Dec 98	1 596	4 127	59 181	3 149 p	3 068 p
Mar 99	1 580	4 325	55 033	3 114 p	4 443 p
Jun 99	1 372	4 007	55 984	2 941 p	4 608 p

(a) Source: Department of Minerals and Energy.

(b) Available for issue through mains.

(c) Includes condensate.

(d) Source: Australian Bureau of Agriculture and Resource Economics.

For more information regarding these tables, please contact Pamela Prince on (08) 9360 5207.

6.5

MINERAL EXPLORATION: EXPENDITURE BY TYPE OF MINERAL SOUGHT

	METALLIC MINERALS.....			NON-METALLIC MINERALS.....		Total minerals \$m
	Base metals(a)	Gold	Other	Diamonds	Other	
	\$m	\$m	\$m	\$m	\$m	
Financial Years						
1996-97	88.1	531.7	n.a.	38.6	n.a.	691.7
1997-98	117.1	459.3	3.8	31.4	2.1	660.4
1998-99	90.9	330.7	3.4	32.9	0.9	523.1
Quarters						
Mar 98	24.7	100.0	0.2	6.0	0.4	142.0
Jun 98	32.9	111.5	2.6	7.6	0.4	173.4
Sep 98	30.3	86.1	0.8	10.4	0.3	154.0
Dec 98	24.2	102.0	0.9	12.4	0.3	157.3
Mar 99	20.9	67.2	1.1	2.7	0.2	102.3
June 99	15.5	75.4	0.6	7.4	0.1	109.4

(a) Includes copper, lead, zinc, silver, nickel and cobalt.

Source: ABS Catalogue No. 8412.0.

6.6

MINERAL PRODUCTION

	Iron ore '000 tonnes	Bauxite '000 tonnes	Gold tonnes	Ilmenite '000 tonnes	Nickel '000 tonnes	Diamonds '000 carats
Financial Years						
1996-97	150 711	27 466	227.0	1 910	115	42 566
1997-98	155 485	28 544	240.5	2 220	134	43 046
1998-99 p	137 470	29 237	219.3	2 130	130	35 948
Quarters						
Mar 98	39 465	7 175	60.9	565	33	9 573
Jun 98	36 050	7 183	57.5	582	36	9 733
Sep 98 p	35 458	6 982	54.7	592	38	12 481
Dec 98 p	36 181	7 416	58.9	482	37	9 056
Mar 99 p	33 158	7 723	52.0	538	20	7 109
Jun 99 p	32 674	7 116	53.8	518	34	7 264

Source: Australian Bureau of Agricultural and Resource Economics.

For more information regarding these tables, please contact
Pamela Prince on (08) 9360 5207.

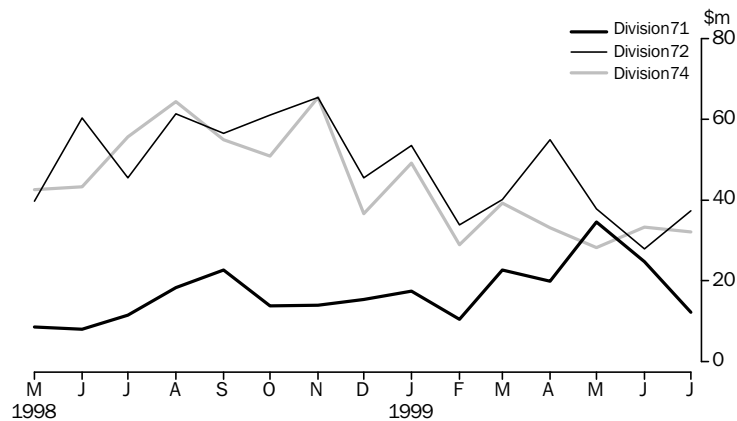
7.1

IMPORTS BY SELECTED DIVISIONS

	33	71	72	74	78
	<i>Petroleum, petroleum products, etc</i>	<i>Power generating machinery and equipment</i>	<i>Machinery specialised for particular industries</i>	<i>General industrial machinery and equipment</i>	<i>Road vehicles</i>
	\$m	\$m	\$m	\$m	\$m
Financial Years					
1996-97	1 043.6	309.8	696.8	420.9	811.7
1997-98	799.0	208.0	618.8	596.7	1 051.9
1998-99	794.2	225.5	583.8	540.4	1 005.1
Months					
May 98	57.0	8.5	39.7	42.5	86.5
Jun 98	60.7	8.1	60.4	43.2	94.8
Jul 98	66.2	11.5	45.5	55.6	81.9
Aug 98	80.3	18.4	61.4	64.4	88.4
Sep 98	65.1	22.6	56.5	55.0	69.1
Oct 98	57.0	13.9	61.2	51.1	94.8
Nov 98	64.6	14.0	65.4	65.3	70.8
Dec 98	52.4	15.4	45.6	36.6	78.3
Jan 99	58.0	17.4	53.6	49.2	90.9
Feb 99	59.8	10.5	33.8	29.0	81.2
Mar 99	47.7	22.6	40.1	39.3	88.0
Apr 99	91.5	19.9	54.9	33.1	99.1
May 99	85.8	34.5	37.8	28.2	79.0
June 99	65.8	24.7	27.9	33.6	83.6
July 99	88.0	12.2	37.3	32.1	102.4

Source: ABS FASTTRACCS Service.

IMPORTS BY SELECTED DIVISION



Source: ABS FASTTRACCS Service.

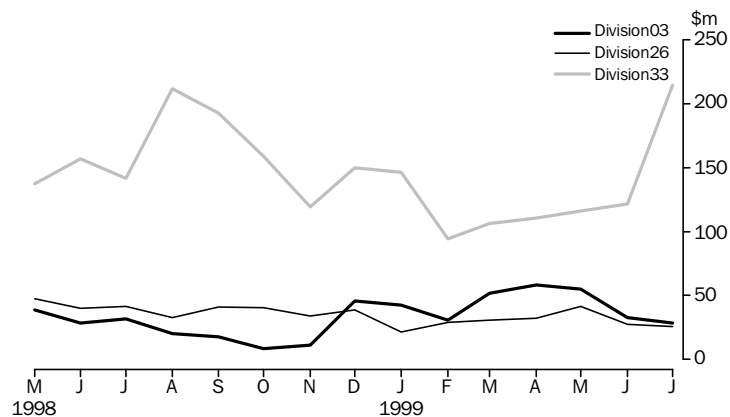
7.2

EXPORTS BY SELECTED DIVISIONS

	03	04	26	28	33
	Fish, crustaceans, molluscs, etc	Cereals and cereal preparations	Textile fibres and waste (excluding yarn or fabric)	Metalliferous ores and metal scrap	Petroleum, petroleum products etc.
	\$m	\$m	\$m	\$m	\$m
Financial Years					
1996-97	371.3	1 667.6	646.5	3 614.6	1 942.8
1997-98	337.2	1 860.5	655.3	4 219.1	2 046.8
1998-99	406.0	1 770.4	410.3	4 300.8	1 670.3
Months					
May 98	38.8	159.0	47.3	381.3	137.2
Jun 98	28.5	193.1	39.9	375.2	156.8
July 98	31.8	118.5	41.4	362.9	141.5
Aug 98	20.4	197.0	32.7	406.7	211.7
Sep 98	17.7	149.1	40.8	435.2	192.6
Oct 98	8.2	130.3	40.4	361.5	159.2
Nov 98	11.0	113.2	33.8	367.8	119.4
Dec 98	45.7	159.8	39.1	396.5	149.7
Jan 99	42.8	194.3	21.3	341.1	146.3
Feb 99	30.8	161.2	29.0	324.0	93.9
Mar 99	51.8	167.9	30.5	354.4	106.3
Apr 99	58.3	119.4	32.4	300.0	114.4
May 99	54.9	97.0	41.6	295.3	118.8
Jun 99	32.6	162.9	27.4	355.5	120.3
Jul 99	28.5	129.7	25.9	35.0	214.9

Source: ABS FASTTRACCS Service.

EXPORTS BY SELECTED DIVISION



Source: ABS FASTTRACCS Service.

For further information regarding these tables, please contact Information Inquiries on (08) 9360 5140.

8.1

NEW MOTOR VEHICLE REGISTRATIONS (a)

	WESTERN AUSTRALIA.....					PERTH STATISTICAL DIVISION.....	
	Passenger vehicles	Light commercial vehicles	Trucks and buses	Motorcycles and scooters Total(b)	Motorcycles and scooters	Motorcycles and scooters Total(b)	Motorcycles and scooters
Financial Years							
1996-97	56 984	10 828	2 207	70 019	2 692	54 721	1 837
1997-98	67 675	11 486	2 295	81 456	3 103	63 131	2 104
1998-99	66 573	10 823	2 375	79 771	3 161	62 268	2 155
Months							
May 98	6 144	1 108	204	7 456	233	5 768	152
Jun 98	7 362	1 380	235	8 977	234	6 902	173
Jul 98	6 064	937	238	7 239	264	5 702	173
Aug 98	5 417	783	186	6 386	277	5 147	180
Sep 98	5 400	790	188	6 378	263	5 062	172
Oct 98	5 448	866	201	6 515	281	5 132	185
Nov 98	5 436	821	186	6 443	343	5 079	280
Dec 98	5 941	928	191	7 060	349	5 504	247
Jan 99	4 414	832	151	5 402	216	4 108	150
Feb 99	5 011	908	185	6 104	253	4 762	177
Mar 99	6 115	1 072	208	7 395	260	5 751	170
Apr 99	r 5 185	r 727	157	6 069	223	4 366	138
May 99	r 5 128	878	197	r 6 203	223	4 871	140
Jun 99	7 015	r 1 281	282	r 8 577	r 208	6 484	143
Jul 99	4 206	685	119	5 010	269	4 135	179

(a) Excludes plant and equipment, caravans and trailers. (b) Excludes motor cycles.

Source: Unpublished New Motor Vehicle Registrations (9303.5.40.001).

8.2

VEHICLE REGISTRATION STATISTICS (a)

	PASSENGER VEHICLES.....		OTHER VEHICLES.....		TOTAL.....	
	Original	Trend	Original	Trend	Original	Trend
Months						
May 98	6 144	6 003	1 312	1 199	7 456	r 7 202
Jun 98	7 362	6 053	1 615	1 196	8 977	7 249
Jul 98	6 064	5 987	1 175	1 177	7 239	r 7 164
Aug 98	5 417	5 820	969	1 147	6 386	6 967
Sep 98	5 400	5 596	978	1 114	6 378	6 710
Oct 98	5 448	5 391	1 067	r 1 094	6 515	6 485
Nov 98	5 436	5 281	1 007	1 091	6 443	6 372
Dec 98	5 941	5 266	1 119	1 098	7 060	6 364
Jan 99	4 414	r 5 352	988	r 1 108	5 402	r 6 460
Feb 99	5 011	r 5 466	1 093	r 1 108	6 104	r 6 574
Mar 99	6 115	r 5 523	1 280	r 1 092	7 395	r 6 642
Apr 99	5 185	r 5 567	884	r 1 063	6 069	r 6 630
May 99	5 128	r 5 506	1 075	r 1 028	6 203	r 6 534
Jun 99	7 015	r 5 384	1 562	r 993	8 577	r 6 377
Jul 99	4 206	r 5 239	804	957	5 010	6 196

(a) Excludes motorcycles, plant and equipment, caravans and trailers.

Source: Unpublished New Motor Vehicle Registrations (9303.5.40.001).

For more information regarding these tables, please contact Elspeth Wilson on

(08) 9360 5904.

9.1

PRIVATE NEW CAPITAL EXPENDITURE BY SELECTED INDUSTRY GROUPS

	SELECTED INDUSTRY.....			TOTAL.....	
	Mining \$m	Manufacturing \$m	Other selected industries \$m	Original \$m	Seasonally adjusted \$m
Financial Years					
1996-97	4 158	625	1 834	6 617	6 627
1997-98	5 759	1 049	1 954	8 761	8 746
1998-99	3 646	1 284	2 036	6 965	7 016
Quarters					
Mar 98	1 473	240	479	2 191	r 2 295
Jun 98	1 607	278	498	r 2 382	r 2 298
Sep 98	r 1 190	r 408	r 616	r 2 214	r 2 338
Dec 98	824	304	r 509	r 1 637	r 1 549
Mar 99	r 893	r 332	r 413	r 1 638	r 1 703
Jun 99	739	240	498	1 476	1 426

Source: ABS Catalogue No. 5646.0.

*For more information regarding these tables, please contact
John Blanchette on Sydney (02) 9268 4357.*

WESTERN AUSTRALIA.....

Indicator	Period	Unit	Current Australian figure	Current figure	Change from last period (%)	Figure one year ago	Change from one year ago(%)
Population							
Estimated resident population	Dec qtr 98 p	'000	18 871.8	1 847.8	0.4	1 812.1	2.0
Natural increase	Dec qtr 98 p	No.	31 389	3 375	0.8	3 303	2.2
Tourism							
<i>Hotels, motels etc and serviced apartments</i>							
Guest arrivals	Mar qtr 99	'000	7 598	596	-8.3	564	5.7
Guest rooms available	Mar qtr 99	No.	183 861	17 517	1.2	16 596	5.5
Room occupancy rates	Mar qtr 99	%	58	56	-3.3	58	-4.6
<i>Overseas visitors</i>							
Short-term arrivals	May 99	No.	298 100	27 520	-15.0	28 280	-2.7
Long-term arrivals	May 99	No.	6 420	640	-28.9	580	10.3
<i>Resident Departures</i>							
Short-term departures	May 99	No.	262 400	31 920	-26.5	33 080	-3.5
Long-term departures	May 99	No.	6 480	750	-2.6	730	2.7
Employment							
<i>Employed persons</i>							
Trend	Jul 99	'000	8 771.1	901.0	0.4	890.3	1.2
<i>Unemployed persons</i>							
Trend	Jul 99	'000	677.5	62.3	-2.7	68.4	-8.9
<i>Participation rate</i>							
Trend	Jul 99	%	63.0	65.8	-0.1	66.9	-1.6
<i>Unemployment rate</i>							
Trend	Jul 99	%	7.2	6.5	-1.5	7.1	-8.4
<i>Full-time adult average weekly earnings</i>							
<i>Trend</i>							
Males	May 99	\$	850.50	864.90	-0.1	866.30	0.2
Females	May 99	\$	684.80	656.30	0.8	629.70	4.2
Persons	May 99	\$	789.10	791.30	0.2	781.20	0.1
Retail							
<i>Monthly retail turnover</i>							
Original	Jun 99	\$m	11 556.4	1 111.8	-4.9	1 142.1	-2.7
Trend	Jun 99	\$m	12 243.2	1 193.4	-0.3	1 148.1	3.9
Construction							
<i>Building Approvals</i>							
Dwelling Units	Jun 99	No	14 154	2 386	22.9	2 054	16.2
Value of all building	Jun 99	\$m	2 831.1	327.0	15.7	286.7	14.1
<i>House Price Indexes</i>							
Materials used in house building	Jun qtr 99	Index No.	119.2	115.9	-0.1	115.9	0.0
Established houses	Mar qtr 99	Index No.	131.3	120.8	2.3	113.7	6.2
Project homes	Mar qtr 99	Index No.	113.8	106.2	0.4	102.5	3.6
Mineral Exploration							
Gold	Mar qtr 99	\$m	98.0	67.2	-34.1	100.0	-32.8
Other minerals	Mar qtr 99	\$m	67.9	34.0	-38.5	42.0	-19.0
Overseas Trade							
Imports	May 99	\$m	7 761.4	629.9	-0.5	763.0	-13.2
Exports	May 99	\$m	6 975.3	1 547.3	-9.4	2 005.7	-22.6
Transport							
<i>Passenger vehicle registrations</i>							
Original	Jun 99	No.	65 067	7 015	36.8	7 362	-4.7
Trend	Jun 99	No.	55 721	5 861	1.9	6 053	-3.2
<i>Total registrations</i>							
Original	Jun 99	No.	74 495	8 577	38.3	8 977	-4.5
Trend	Jun 99	No.	65 729	6 906	1.4	7 249	-4.7
Finance							
<i>Private New Capital Expenditure</i>							
Original	Mar qtr 99	\$m	10 552	1 660	1.2	2 191	-24.2
Seasonally adjusted	Mar qtr 99	\$m	11 924	1 762	18.3	2 353	-25.1

SELF-HELP ACCESS TO STATISTICS

- CPI INFOLINE* For current and historical Consumer Price Index data, call 1902 981 074 (call cost 75c per minute).
- DIAL-A-STATISTIC* For the latest figures for National Accounts, Balance of Payments, Labour Force, Average Weekly Earnings, Estimated Resident Population and the Consumer Price Index call 1900 986 400 (call cost 75c per minute).
- INTERNET* www.abs.gov.au
- LIBRARY* A range of ABS publications is available from public and tertiary libraries Australia-wide. Contact your nearest library to determine whether it has the ABS statistics you require.

WHY NOT SUBSCRIBE?

- PHONE* +61 1300 366 323
- FAX* +61 03 9615 7848

CONSULTANCY SERVICES

ABS offers consultancy services on a user pays basis to help you access published and unpublished data. Data that is already published and can be provided within 5 minutes is free of charge. Statistical methodological services are also available. Please contact:

<i>INQUIRIES</i>	<i>City</i>	<i>By phone</i>	<i>By fax</i>
	Canberra	02 6252 6627	02 6207 0282
	Sydney	02 9268 4611	02 9268 4668
	Melbourne	03 9615 7755	03 9615 7798
	Brisbane	07 3222 6351	07 3222 6283
	Perth	08 9360 5140	08 9360 5955
	Adelaide	08 8237 7400	08 8237 7566
	Hobart	03 6222 5800	03 6222 5995
	Darwin	08 8943 2111	08 8981 1218

POST Client Services, ABS, PO Box 10, Belconnen ACT 2616

EMAIL client.services@abs.gov.au



2130550009999
ISBN 0727-2367

RRP \$17.50